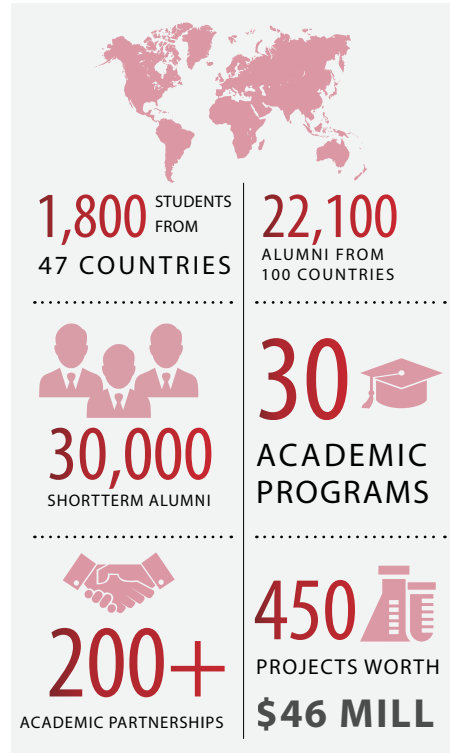


ABOUT AIT

Established in Bangkok in 1959, AIT is a leading regional postgraduate institution and is actively working with public and private sector partners throughout the region and with some of the top universities in the world. The mission of AIT is to develop highly qualified and committed professionals who play leading roles in the region's sustainable development and its integration into the global economy.

AIT's academic programs are provided by the three schools, with many fields of academic study and research areas, over one hundred highly qualified faculty members and researchers, and numerous Centers of Excellence that support the various functions of the institution.



www.ait.ac.th

EARN A PROFESSIONAL MASTER DEGREE IN STRUCTURAL DESIGN OF TALL BUILDINGS FROM AN INTERNATIONALLY RECOGNIZED INSTITUTION

Learn at your own pace, at your own time without leaving your job



Enhance your knowledge and skills without interrupting your career

www.solutions.ait.ac.th/pmtb

APPLY NOW

www.solutions.ait.ac.th/pmtb



For inquiries : Contact Mr. Justin Arnold Finch, Program Coordinator

+ (662) 524 6388 | + (662) 524 5533 | justin@ait.ac.th | solutions@ait.ac.th

Offered by
Civil and Infrastructure Engineering Department
School of Engineering and Technology









AIT
Asian Institute of Technology



AIT offers you the opportunity to enhance your knowledge and skills in structural engineering

PMTB through its Blended Learning (online+ in class) approach brings together the best of academics and real-world experience.

In PMTB you will:

-  Learn from the experts involved in design and review of over 100 tall buildings.
-  Learn where you want, and whenever you want.
-  Be able to align your professional commitments with learning.
-  Experience high quality digital learning resources.
-  Access to extensive knowledge, research programs, project experience, labs, and professional network at AIT.
-  Have hands-on project experience at leading structural engineering/ infrastructure companies.



PMTB uses blended approach:
online + classroom + on-the-job learning
= learn at your own pace at your own time without leaving your job

Join PMTB

- Step 1** Express your interest to join PMTB
- Step 2** Provide the requested documents (*Bachelor/ Master degree & transcript, TOEFL/ IELTS score, two referrals, and passport copy*), and undertake aptitude test to gauge current understanding of topics and for stepping into Blended Learning ecosystem.
- Step 3** Login into PMTB online platform



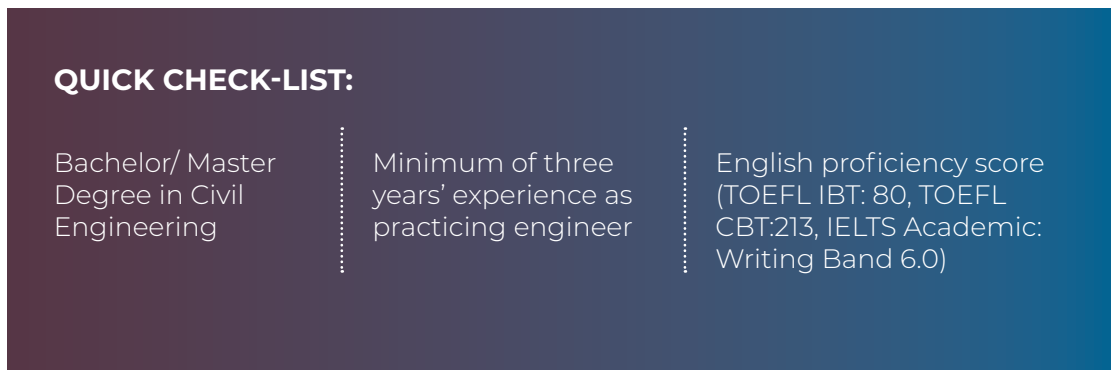
Or send an email: justin@ait.ac.th



Intake Deadline	January 2021 Semester: 10 December 2020	August 2021 Semester: 30 June 2021
------------------------	----------------------------------------------------	-----------------------------------------------



Join a global network of fellow professionals and alumni from over 50 countries



QUICK CHECK-LIST:

Bachelor/ Master Degree in Civil Engineering

Minimum of three years' experience as practicing engineer

English proficiency score (TOEFL IBT: 80, TOEFL CBT:213, IELTS Academic: Writing Band 6.0)